



# AVTOMATIKA-VEKTOR

- LOG ACCOUNTING SYSTEMS
- LOG SORTING CONTROL SYSTEMS
- SAWLINE CONTROL SYSTEMS
- BOARD SORTING CONTROL SYSTEMS
- DRYING KILNS AUTOMATION
- SAWING OPTIMIZATION SOFTWARE



[www.a-vektor.ru](http://www.a-vektor.ru)



AVTOMATIKA-VEKTOR was organized by a group of engineers and programmers in 2009

We work in the field of timber industry enterprises automation

We help our clients to minimize downtime periods and non-production costs caused by them, to reduce raw material consumption and to optimize enterprise control

- 40+ professionals in the team
- 25+ years experience in this field
- 200+ completed projects in Russia and abroad
- patented software and certified equipment



# SAWMILL AUTOMATION

all projects are performed individually with customer's requirements taken into account



DESIGN



SOFTWARE  
DEVELOPMENT



PRODUCTION



COMMISSION



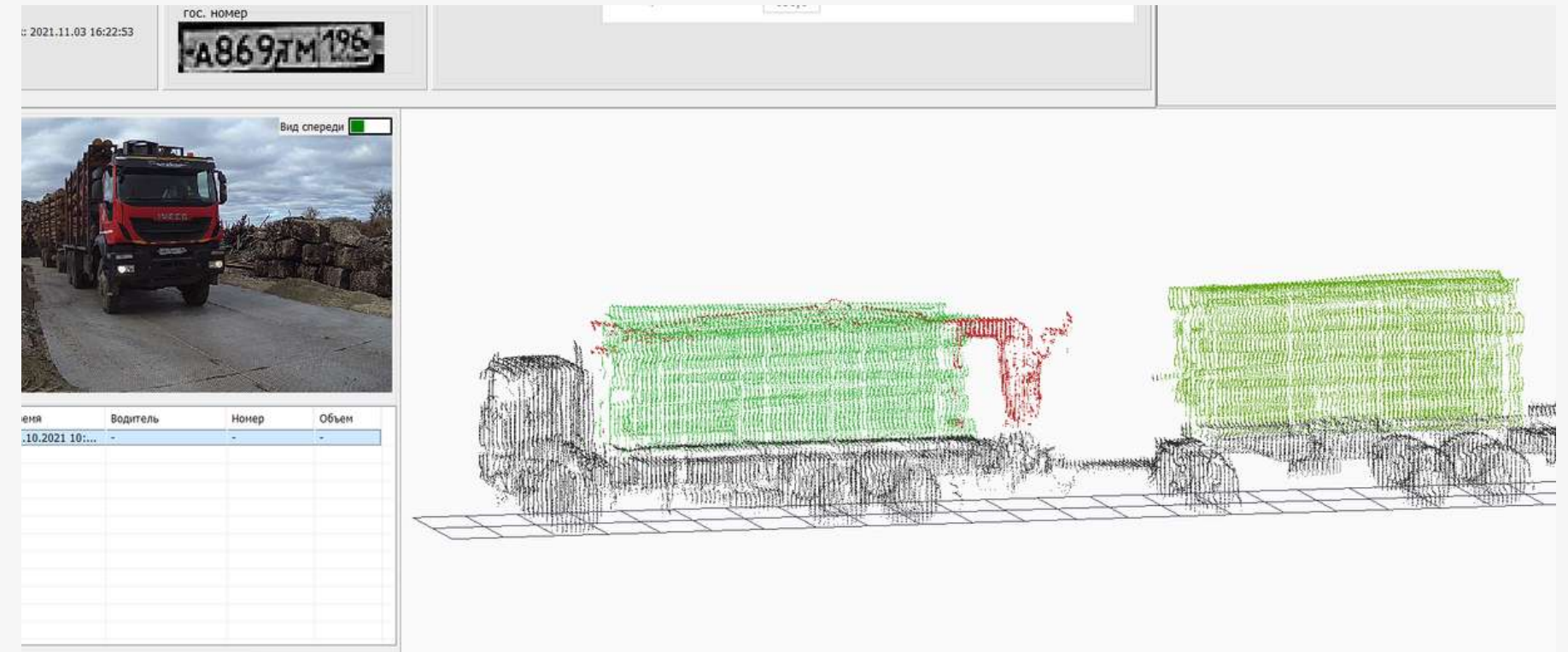
TECHNICAL  
SUPPORT

# REFERENCES

The image features a map of Europe and Russia, overlaid with numerous logos of timber and wood processing companies. The logos are arranged in a grid-like fashion across the top and bottom of the map. The map itself is marked with green circular pins, each containing a number (e.g., 2, 3, 4, 5, 6, 7, 8, 10, 11, 13, 19). The logos include:

- JSC "BORISOVSKI DOK"** (Production of details from timber)
- storaenso**
- SVEZA**
- WOODWORKING COMPLEX LESO BALT**
- ILIM TIMBER**
- CHEREPOVETSLES**
- Sawmill25**
- usg**
- VMG**
- TORISAWMILL**
- A&IR**
- Vitebsk sawmill**
- SLDK TIMAN TIMBER**
- segezha group**
- Latvijas Finieris**
- MADERA**
- VOSTOK-RESURS**
- lenaservis**
- ILIM**
- AKZ**
- Luzales**
- BORWOOD**
- SOLOMENSKIY LESOZAVOD** (ESTABLISHED IN 1874)
- LESPLITINVEST** (Soyuz Industrial Group)
- COMPANY GROUP VOLOGODSKIYE LESOPROMYSHLENNIKI**
- NORWOOD SM**
- SUDOMA GS GROUP**
- SOLDEK** (ОТКРЫТОЕ АКЦИОНЕРНОЕ ОБЩЕСТВО "СОЛДЕК")
- Novoyeniseiskiy Wood-Chemical Complex**

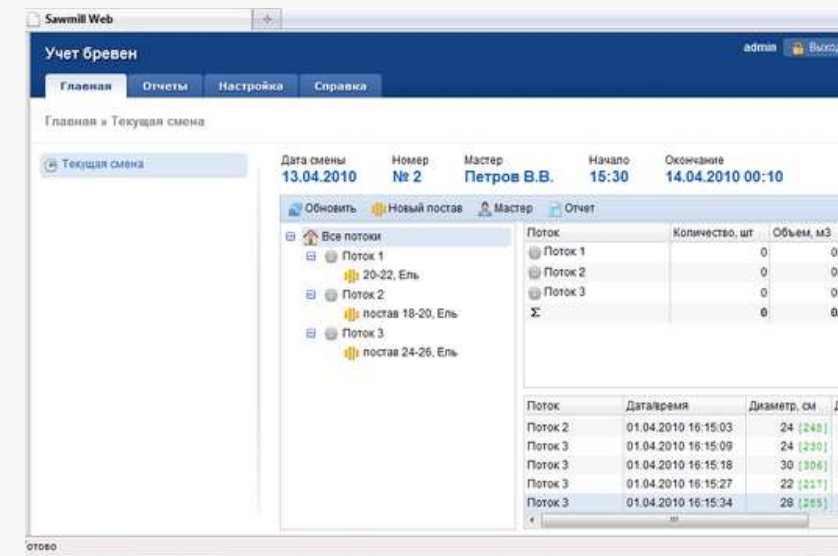
Red  
October



**Truck Inspector:** system for automatic measurement of timber volume on timber trucks

# Our products

Automation and software for sawmills



**Round timber accounting**




**Log sorting control system**

# VECTOR log scanners

 VECTOR-1D: measuring logs in one plane

Main application: round timber accounting when feeding to sawing or peeling, and automation for "butt/top" log rotation

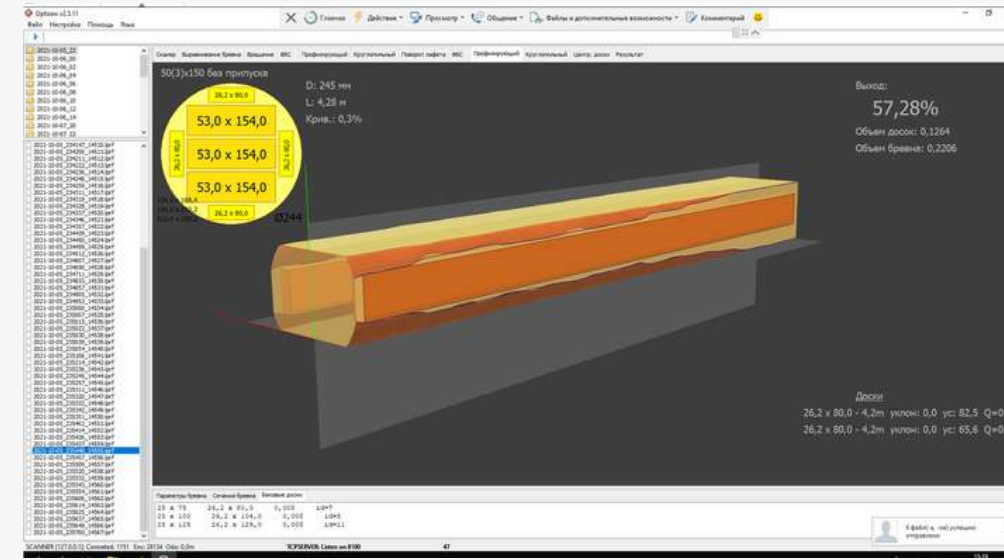
 VECTOR-3D: 3D-scanner for logs

Used as a part of round timber sorting lines, sawmill control and optimization system, and for round timber accounting





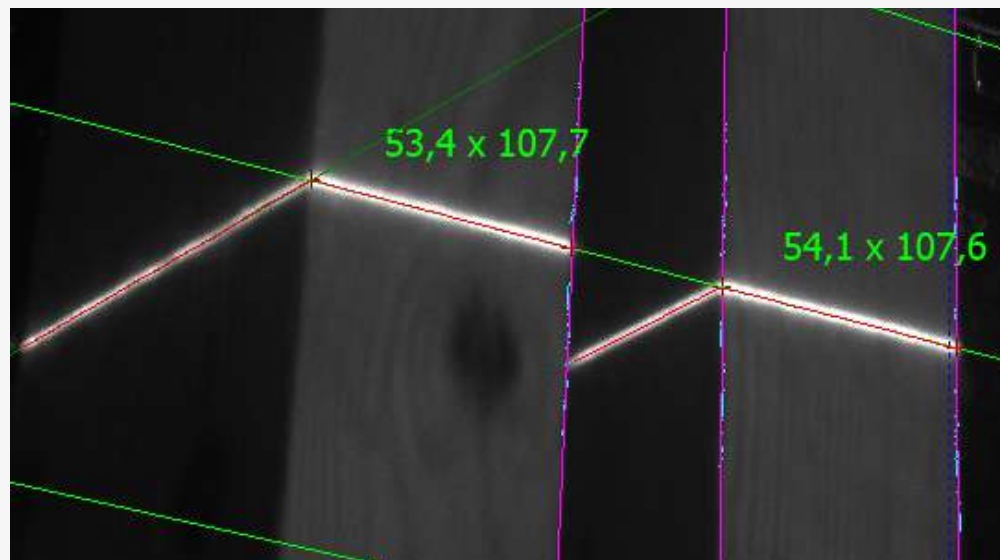
Sawline control system



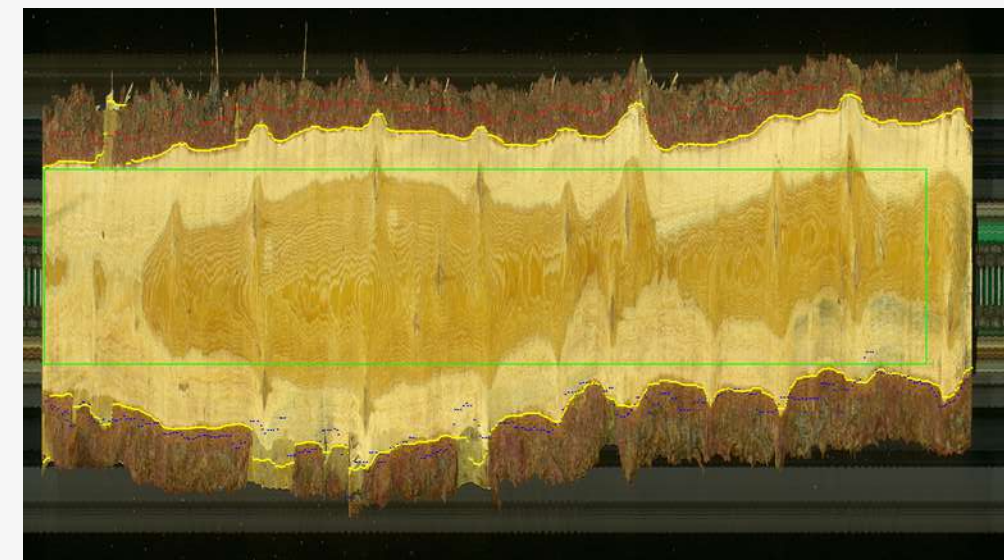
SmartSaw program



Board sorting control system



Sawline Inspector: lumber sizes online control



Edger optimizer



Drying kilns automation

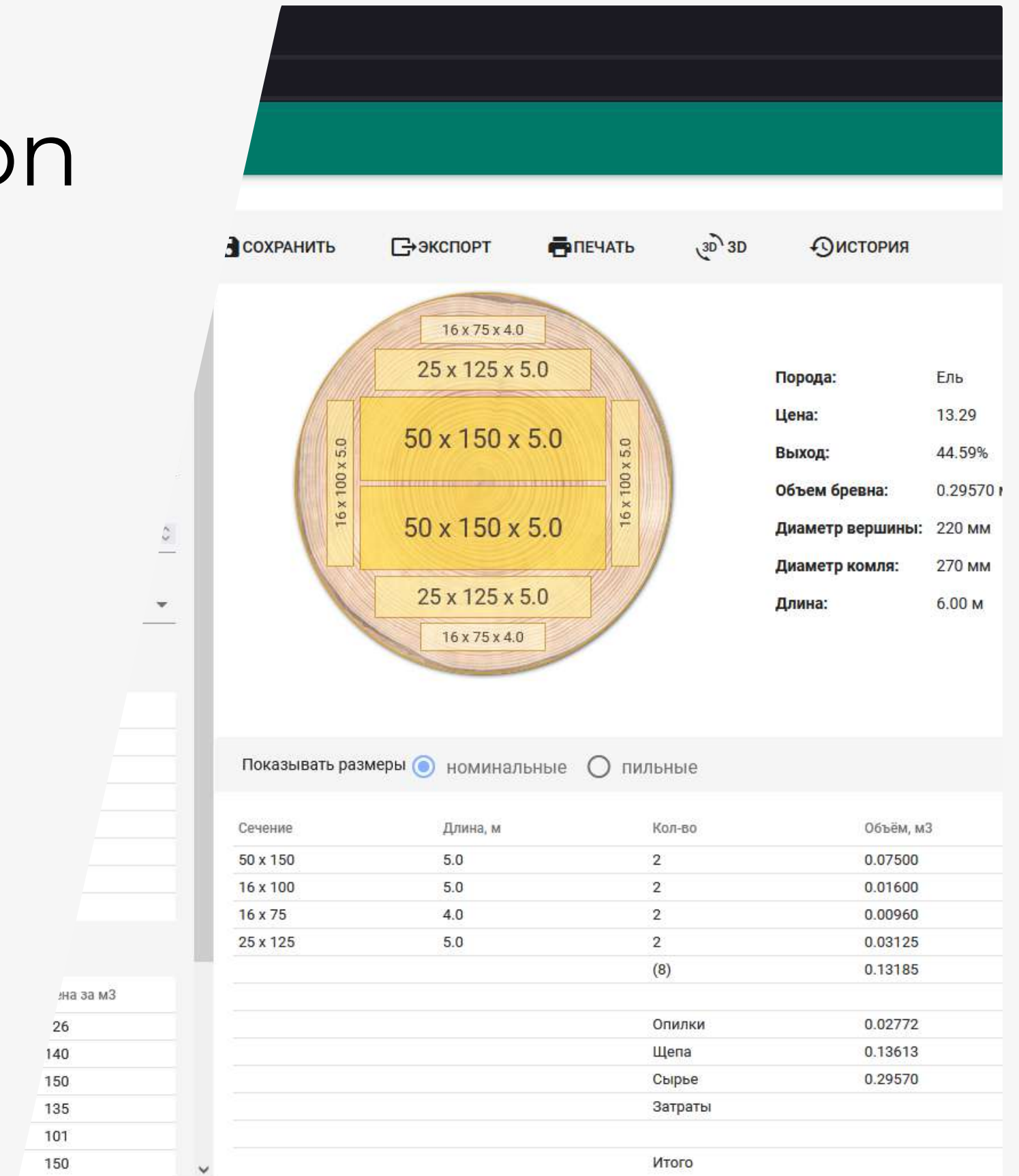
# SawsOptimization: web-version

The basic function is to calculate the optimal sawing patterns based on

- log size
- required size of lumber and its price
- sawmill equipment characteristics

## Advantages

- provides maximum yield or maximum cost of products
- is not bound to a specific computer: data is stored on the server
- there are several options for different users: from the simplest one, which gives optimal cutting plans, to more complex ones, designed for large enterprises
- any number of users can be connected - all depends from type of your subscription
- all program updates are available immediately



СОХРАНИТЬ   ЭКСПОРТ   ПЕЧАТЬ   3D 3D   ИСТОРИЯ

Порода: Ель  
 Цена: 13.29  
 Выход: 44.59%  
 Объем бревна: 0.29570  
 Диаметр вершины: 220 мм  
 Диаметр комля: 270 мм  
 Длина: 6.00 м

Показывать размеры  номинальные  пильные

Сечение	Длина, м	Кол-во	Объем, м3
50 x 150	5.0	2	0.07500
16 x 100	5.0	2	0.01600
16 x 75	4.0	2	0.00960
25 x 125	5.0	2	0.03125
		(8)	0.13185
		Опилки	0.02772
		Щепа	0.13613
		Сырье	0.29570
		Затраты	
		Итого	



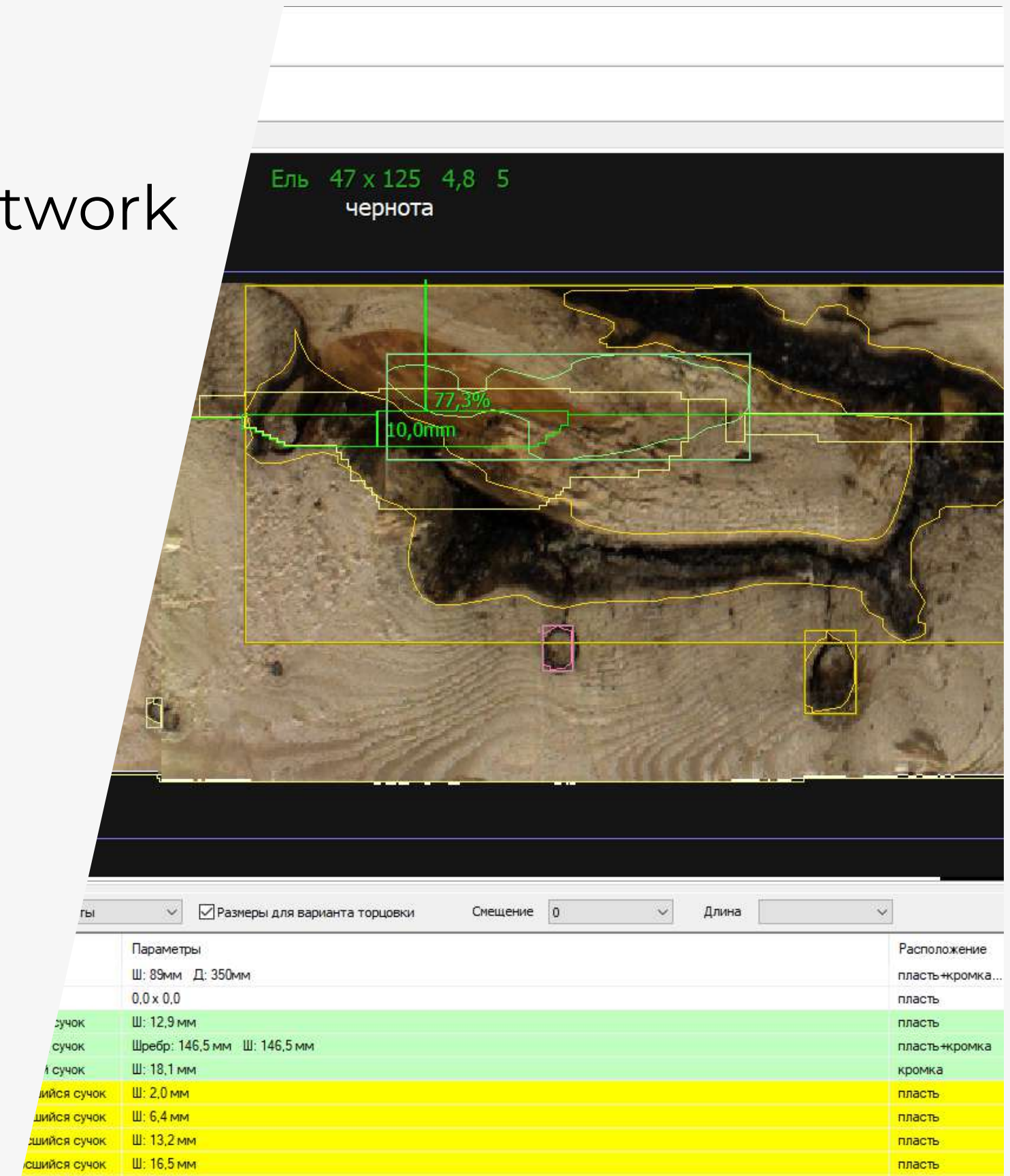
# RuScan 2.0: lumber quality scanner with RuScan Expert software based on neural network

## Functions

- defect geometry search and measurement
- type of lumber assignment
- wood species determination
- trimming optimization

## Advantages

- patented method for lumber defects detection
- 16+ board images for analyses
- Expert software based on neural network
- detection of the main lumber defects with probability from 85 to 97 %
- served by one operator
- convenient reporting system viewing via any browser
- integration with the other company products





# Contacts



## Location

Novgorodsky prospekt 32, build. 4,  
Arkhangelsk, Russia, 163002



## Phone

+7 (8182) 41-03-30



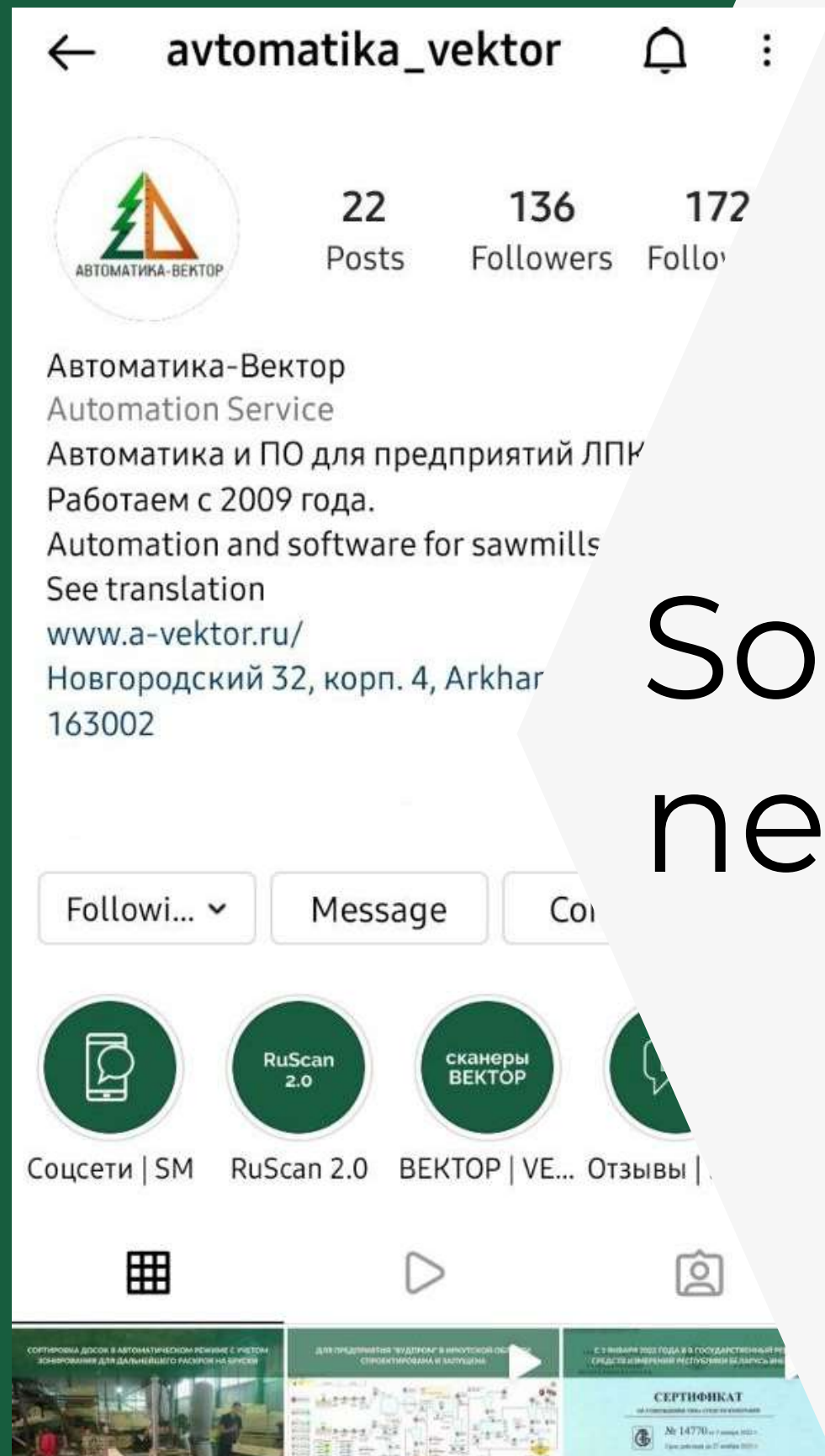
## E-mail

[mail@a-vektor.ru](mailto:mail@a-vektor.ru)



## Web-page

[www.a-vektor.ru](http://www.a-vektor.ru)



# Social networks



[instagram.com/  
avtomatika\\_vektor](https://www.instagram.com/avtomatika_vektor)



[facebook.com/  
avtomatikavektor](https://www.facebook.com/avtomatikavektor)